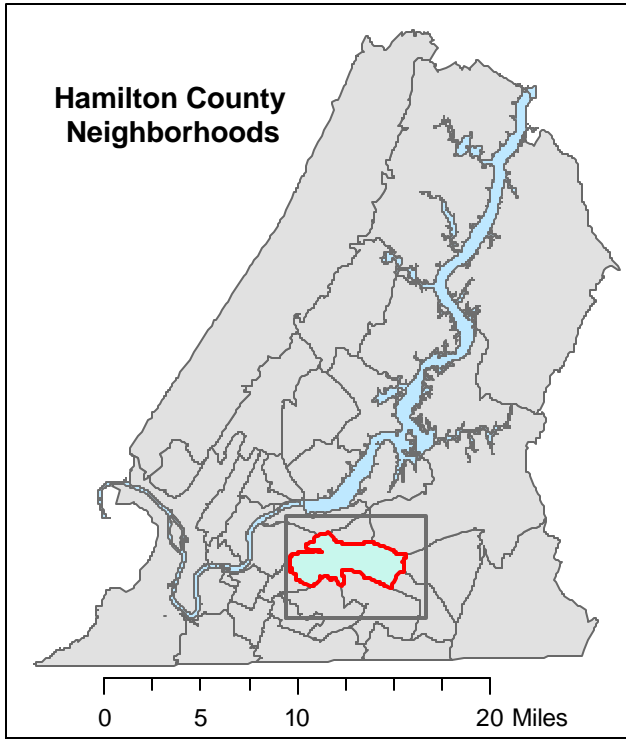
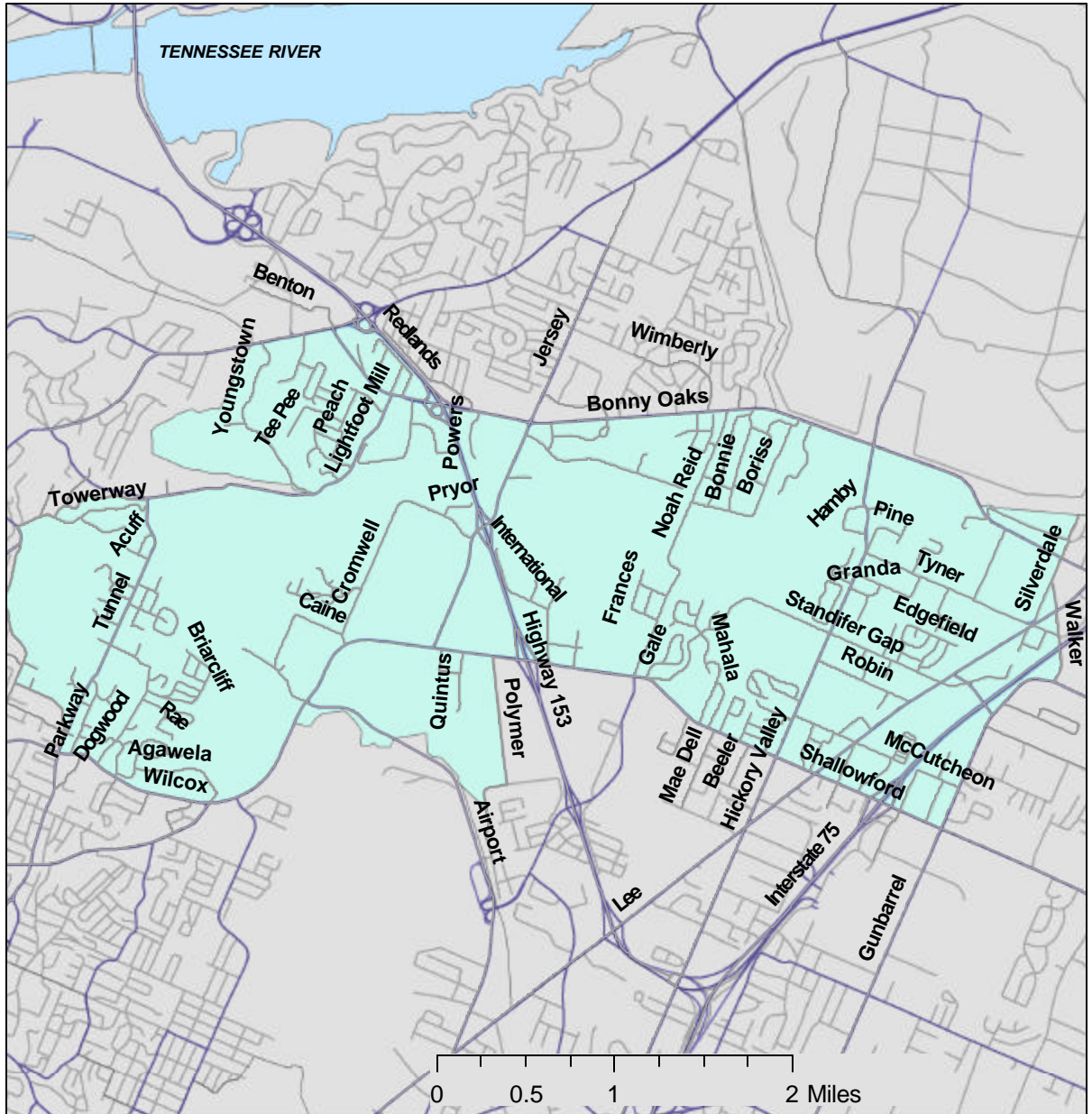


Hamilton County Neighborhoods



Tyner/Greenwood



		Hamilton County		Tyner/ Greenwood		
		2006 SOCRR	2005-2007 ACS	2006 SOCRR	2008 SOCRR	
POPULATION	Population	307,896	327,138	8,320	n/a	
	Households	124,515	132,102	3,575	n/a	
	Per Capita Income	\$21,593	n/a	\$19,075	n/a	-
	% Below Poverty	12.1%	13.0%	13.9%	n/a	+
	% Single Parents with Kids Under 18	8.6%	8.6%	11.2%	n/a	+
	% Registered Voters	76.0%	n/a	86.5%	n/a	+

		Hamilton County		Tyner/ Greenwood			
		2006 SOCRR	2008 SOCRR	2006 SOCRR	2006	2007	
CRIME (Rate per 100,000 Population)	Murder Rate	5.8	7.1	0.0	n/a	n/a	-
	Robbery Rate	187.7	195.2	207.0	253.0	356.5	+
	Burglary Rate	879.5	1148.4	1702.1	2242.7	2564.7	+
	Aggravated Assault	415.1	646.0	368.0	230.0	230.0	-
	Simple Assault Rate	1162.1	1590.1	1805.6	621.0	793.6	-
	Vandalism Rate	1428.4	1591.8	2472.7	1794.1	2334.7	+
	Drug Rate	1629.4	1188.4	1265.1	333.5	368.0	-

		Hamilton County		Tyner/ Greenwood		
		2006 SOCRR	2008 SOCRR	2006 SOCRR	2008 SOCRR	
EMPLOYMENT AND ECONOMY	% College Educated (25 years and older): Male/Female	32.5% / 27.9%	n/a	38.6% / 22.5%	n/a	+ / -
	% in the Labor Force (16 years and older): Male/Female	72.6% / 57.6%	n/a	67.0% / 63.3%	n/a	- / +
	% Unemployed (16 years and older): Male/Female	5.0% / 5.9%	n/a	7.3% / 7.2%	n/a	+ / +
	New Business Applications	113	11,415 (2001-07)	179	n/a	+

	Hamilton County			Tyner/ Greenwood		
	2000 Census	2008 SOCRR		2006 SOCRR	2008 SOCRR	
HOUSING	Occupied Housing Units	124,444	n/a	3,630	n/a	
	% Change One Family Household Units 2001-2007	n/a	9.0%	n/a	10.5%	+
	% Home Ownership	67.5%	n/a	60.8%	n/a	-
	Homeowners: % Stating housing cost is a financial burden	18.4%	n/a	20.5%	n/a	+
	Renters: % Stating housing cost is a financial burden	35.9%	n/a	28.4%	n/a	-
	% Home Purchase Loans Approved 2004-2006	n/a	n/a	n/a	15.6%	
	% Home Purchase Loans from Suprime Lenders 2004-2006	n/a	n/a	n/a	14.6%	
	% Refinance Loans from Subprime Lenders 2004-2006	n/a	n/a	n/a	16.2%	
	% Foreclosures 2006 and 2007	n/a	n/a	n/a	1.7%	
	Section 8 Housing (% of all occupied units)	1.8%	n/a	3.0%	n/a	+
	Median Value of Housing Sales (MLS Data)	\$118,000 (2002)	\$139,700 (2007)	\$109,924	\$115,000 (2002-07)	-
	% Increase Median Value of Housing Sales (MLS Data) 2001 to 2007	n/a	18.4%	n/a	25.0%	+
	Avg. New Building Permits (One Family Detached Houses)	41	n/a	39	n/a	-

		Chattanooga				Tyner/ Greenwood				
NSC 311 Neighborhood Services Complaints		2004	2005	2006	2007	2004	2005	2006	2007	
HOUSING	Housing	1.1%	1.0%	1.6%	1.1%	0.4%	0.6%	0.5%	0.4%	-
	Overgrown and not vacant	2.2%	2.8%	2.6%	2.4%	1.0%	1.5%	1.1%	1.2%	-
	Overgrown and vacant	0.6%	0.7%	0.6%	0.7%	0.2%	0.3%	0.4%	0.3%	-

		Hamilton County	Tyner/Greenwood	
		2008 SOCRR	2008 SOCRR	
ENVIRONMENT	Parks and protected lands: Total acres	21,440	22.5	
	Parks and protected lands: Percent of County total	100%	0.1%	
	Parks and protected lands: Acres per 1000 persons	69.6	2.6	-
	Percent of population within ¼ mile of CARTA Bus Stops	24.0%	29.7%	+
	Percent of population within 1/2 mile of CARTA Bus Stops	34.2%	70.0%	+
	Air Emissions : Pounds per year	339,936	3,360	
	Water pollutants: Pounds per year	1,067	0	

		Hamilton County	Tyner/Greenwood	
		2001-2006 Birth data	2001-2006 Birth data	
EARLY CHILDHOOD	Risk factor 1: Low birthweight	11.1%	12.5%	+
	Risk factor 2: Single mother	41.5%	49.4%	+
	Risk factor 3: Mother no high school diploma/GED	25.2%	17.4%	-
	Risk factor 4: Teen mother	14.4%	13.9%	-
	Poverty (Census2000)	12.1%	13.9%	+
	Births with all four risk factors	1.5%	0.7%	-
	Mother's Race/Ethnicity: White	62.8%	39.7%	-
	Mother's Race/Ethnicity: African American	26.0%	49.4%	+
	Mother's Race/Ethnicity: Latina	8.9%	5.9%	-

		Hamilton County					Tyner/ Greenwood		
		SOCRR 2006	2004- 2005	2005- 2006	2006- 2007	2007- 2008	2006 SOCRR	2008 SOCRR	
EDUCATION	Economically Disadvantaged	49.3%	n/a	n/a	55.1%	n/a	70.9%	73.9%	+
	Public School Enrollment (% of total population)	12.6%	n/a	n/a	n/a	n/a	13.0%	n/a	+
	Public School Enrollment (% Change 2004-2005 to 2007-2008)	n/a	n/a	n/a	n/a	n/a	n/a	4.6%	
	% Failing to meet attendance requirement	31.2%	n/a	n/a	n/a	n/a	26.8%	26.3%	-
	TCAP Math Proficient and Advanced	82.7%	82.8%	84.7%	87.3%	86.4%	70.8%	83.4%	-
	TCAP % Math Advanced Only	41.7%	41.6%	37.5%	38.2%	43.4%	16.7%	23.6%	-
	TCAP % Reading Proficient and Advanced	89.4%	88.2%	88.8%	91.5%	90.8%	82.9%	90.7%	-
	TCAP % Reading Advanced Only	38.8%	38.2%	35.3%	37.7%	42.0%	22.9%	24.7%	-
	English II Gateway Proficient and Advanced	n/a	n/a	n/a	94.1%	95.7%	n/a	91.3%	-
	English II Gateway % Advanced Only	n/a	n/a	n/a	66.1%	72.0%	n/a	53.8%	-
	Math Gateway Proficient and Advanced	n/a	n/a	n/a	79.0%	n/a	n/a	50.9%	-
	Math Gateway % Advanced Only	n/a	n/a	n/a	28.0%	n/a	n/a	13.8%	-
	English Language Learners	1.7%	n/a	n/a	n/a	n/a	2.3%	n/a	+
	% White	60.5%	n/a	n/a	n/a	n/a	17.9%	15.7%	-
	% African American	35.2%	n/a	n/a	n/a	n/a	78.2%	79.2%	+
	% Latino	2.8%	n/a	n/a	n/a	n/a	2.2%	2.9%	+
% Other	1.6% (Asian)	n/a	n/a	n/a	n/a	1.7% (Asian)	2.2%	+	