

Does Chattanooga Have a Crime Problem?

David Eichenthal
President and CEO
Ochs Center for Metropolitan Studies
Chattanooga, Tennessee

Hearing on Crime in Chattanooga
October 3, 2008

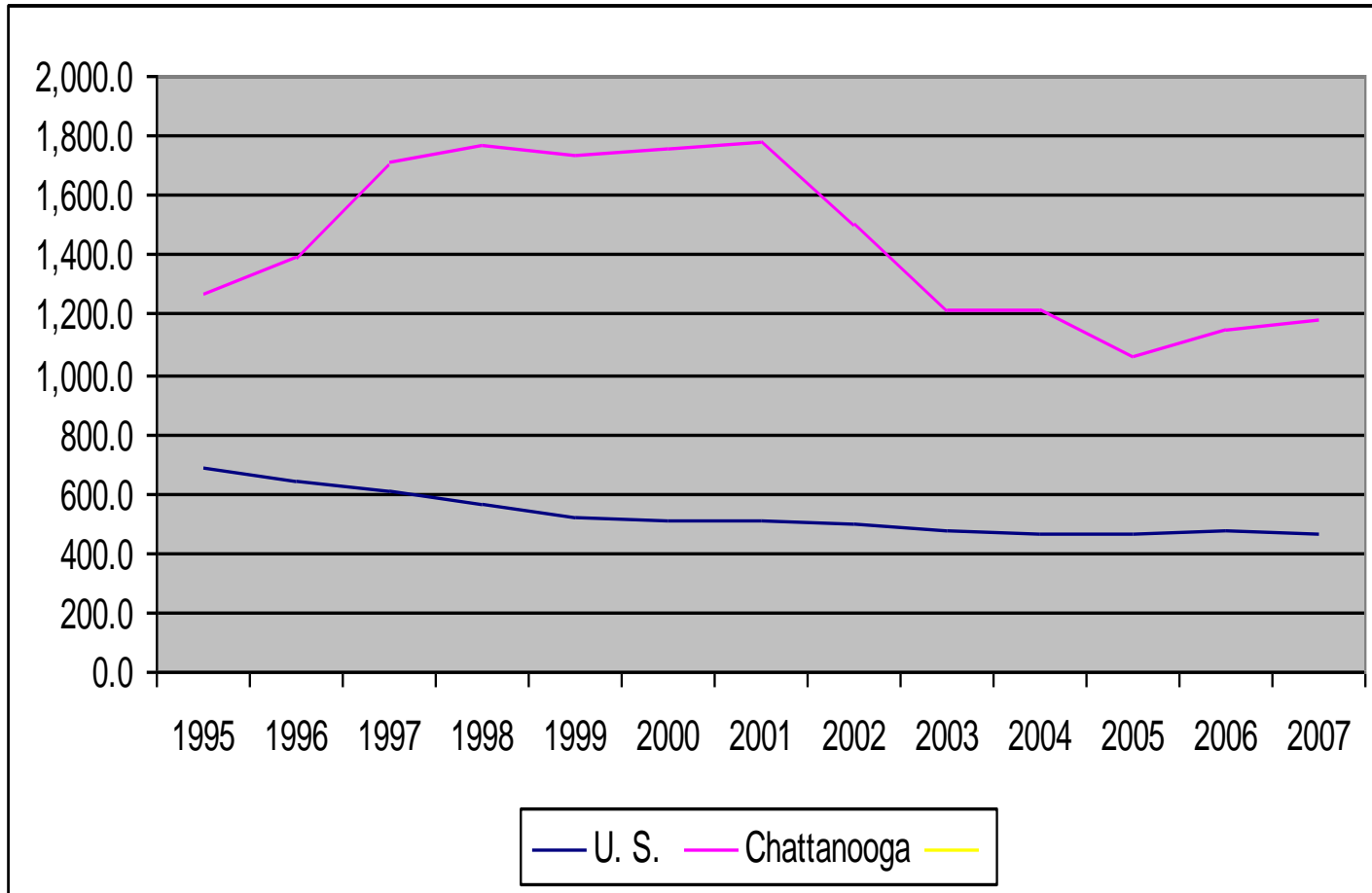
Crime in the United States

- After a steady increase throughout the 1970s, violent crime dropped significantly in the mid 1980s.
- The emergence of crack cocaine as the drug of choice and the violence incidental to the drug trade led to record high rates of violent crime until the early 1990s.
- Beginning in 1992, the violent crime rate declined for 13 years in a row. The first increase occurred in 2005. The violent crime rate then declined again in 2006 and 2007.
- Beginning in 1992, the property crime rate declined for 9 years in a row. After a brief up tick in 2001, it has resumed a decline since.

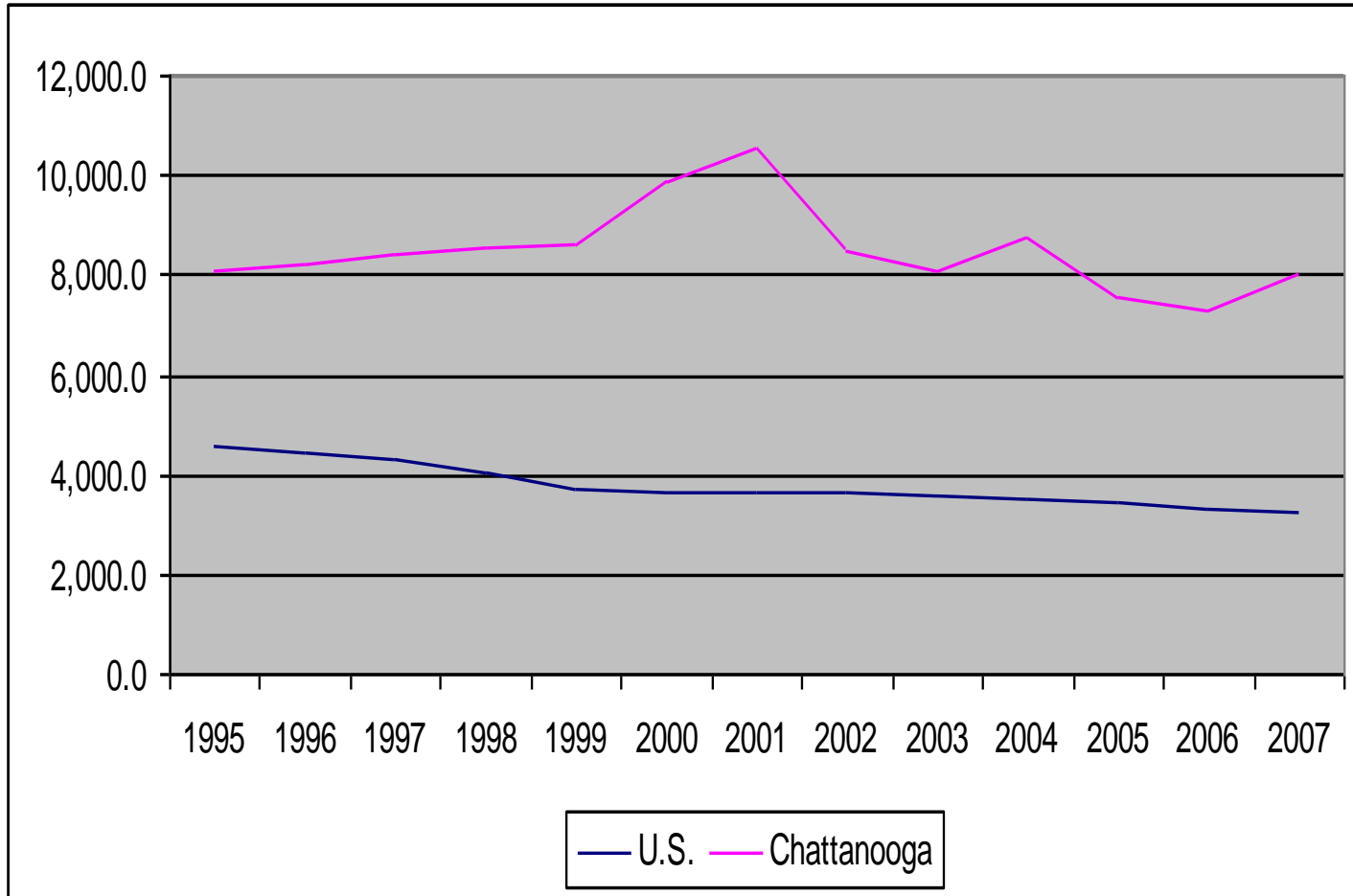
Crime in Chattanooga

- Crime rates in Chattanooga continued to increase during the 1990s.
- Violent and property crime rates both peaked in 2001.
- Between 1995 and 2007, violent crime rate declined nationally by 30.8% compared to just 6.7% in Chattanooga
- During the same period, property crime rate declined nationally by 27.4% while remaining unchanged in Chattanooga

Violent Crime: U.S. and Chattanooga



Property Crime: U.S. and Chattanooga



Comparing Crime in Chattanooga to Other Cities - 2007

- The nation's largest cities – Detroit, Los Angeles and New York
- Southern cities – Atlanta, Memphis, Nashville and Raleigh
- Midsize cities – Birmingham, Huntsville, Knoxville and Providence

Violent Crime Rate - 2007

Detroit	2289.0
Memphis	1950.7
Atlanta	1623.8
Nashville	1508.9
Birmingham	1458.1
Chattanooga	1182.6
Knoxville	1122.6
Huntsville	814.1
Los Angeles	718.4
New York	613.8
Raleigh	571.5
Providence	560.1

Property Crime Rate – 2007

Birmingham	8625.0
Memphis	8062.4
Chattanooga	7348.5
Atlanta	7285.9
Knoxville	7016.2
Detroit	6771.7
Huntsville	6335.0
Nashville	5577.4
Providence	4756.0
Raleigh	3481.7
Los Angeles	2621.3
New York	1818.5

Limited Effect of Poverty

	Poverty Rate	Violent Crime Rate	Property Crime Rate
Detroit	32.4	2289.0	6771.7
Memphis	24.3	1950.7	8062.4
Atlanta	20.3	1623.8	7285.9
Nashville	13.7	1508.9	5577.4
Birmingham	24.0	1458.1	8625.0
Chattanooga	17.6	1182.6	7348.5
Knoxville	20.1	1122.6	7016.2
Huntsville	13.1	814.1	6335.0
Los Angeles	17.8	718.4	2621.3
New York	17.8	613.8	1818.5
Raleigh	11.2	571.5	3481.7
Providence	27.1	560.1	4756.0

Public Perceptions of Crime and Public Safety

- 2008 Survey of 1000 Residents of Hamilton County, Approximately Half of the Sample were Residents of Chattanooga
- Worry about Physical Safety
 - Countywide, 75% never or rarely worry about their physical safety; in Chattanooga, 68% never or rarely worry about physical safety
 - Residents of Chattanooga are more than twice as likely to sometimes or often worry (32%) than residents of the rest of the County (13%)
 - 43% of African Americans countywide sometimes or often worry about their physical safety, compared to 19% of whites

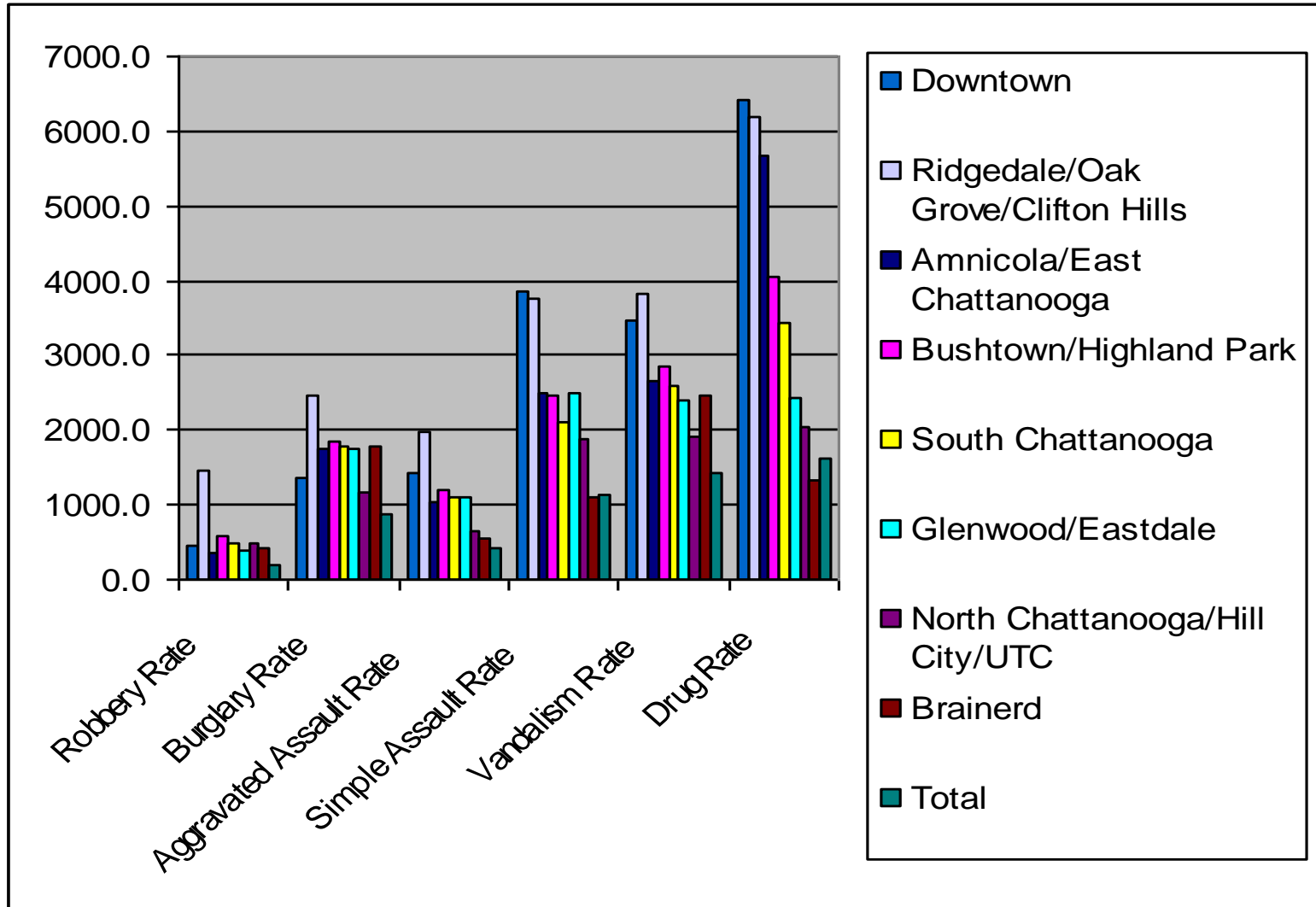
Public Perceptions of Crime and Public Safety

- Worry about Robbery/Burglary
 - Countywide, 66% of residents never or rarely worry about robbery or burglary; in Chattanooga, 61% never or rarely worry about robbery or burglary
 - Residents of Chattanooga are more likely to sometimes or often worry about robbery or burglary (38%) than residents of the rest of the county (25%)

Public Perceptions of Police

- Police Responsiveness
 - 87% of County residents believe the police are very or somewhat responsive
 - Virtually no difference by location (city vs. county) or race
- Police Fairness
 - Similarly, 87% of residents believe police are very or somewhat fair in their treatment of residents

Crime and Place in Chattanooga and Hamilton County - 2005

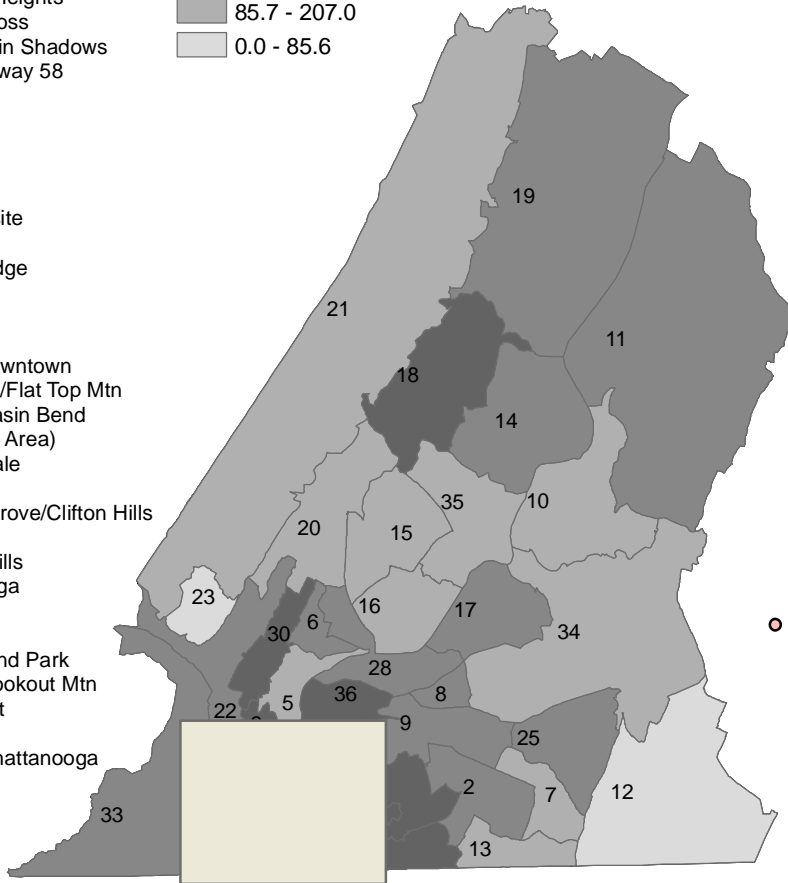
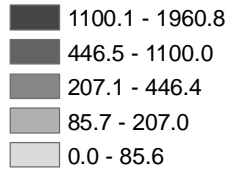


Neighborhood Crime Rate Per 100,000 Residents by Neighborhood (2005)

Aggravated Assault

- | ID | Neighborhood Name |
|----|-----------------------------------|
| 1 | East Ridge |
| 2 | Hickory Valley/Hamilton Place |
| 3 | North Chattanooga/Hill City/UTC |
| 4 | Woodmore/Dalewood |
| 5 | Riverview/Stuart Heights |
| 6 | Lupton City/Norcross |
| 7 | Westview/Mountain Shadows |
| 8 | Bonny Oaks/Highway 58 |
| 9 | Tyner/Greenwood |
| 10 | Harrison Bay |
| 11 | Birchwood |
| 12 | Apison |
| 13 | East Brainerd |
| 14 | Dallas Bay/Lakesite |
| 15 | Hixson |
| 16 | Northgate/Big Ridge |
| 17 | Harrison |
| 18 | Soddy Daisy |
| 19 | Bakewell |
| 20 | Falling Water/Browtown |
| 21 | Walden/Mowbray/Flat Top Mtn |
| 22 | Mtn Creek/Moccasin Bend |
| 23 | Signal Mtn (Town Area) |
| 24 | Glenwood/Eastdale |
| 25 | Collegedale |
| 26 | Ridgedale/Oak Grove/Clifton Hills |
| 27 | Downtown |
| 28 | Dupont/Murray Hills |
| 29 | South Chattanooga |
| 30 | Red Bank |
| 31 | Brainerd |
| 32 | Bushtown/Highland Park |
| 33 | Lookout Valley/Lookout Mtn |
| 34 | Ooltewah/Summit |
| 35 | Middle Valley |
| 36 | Amnicola/East Chattanooga |

Aggravated assault rate per 100,000



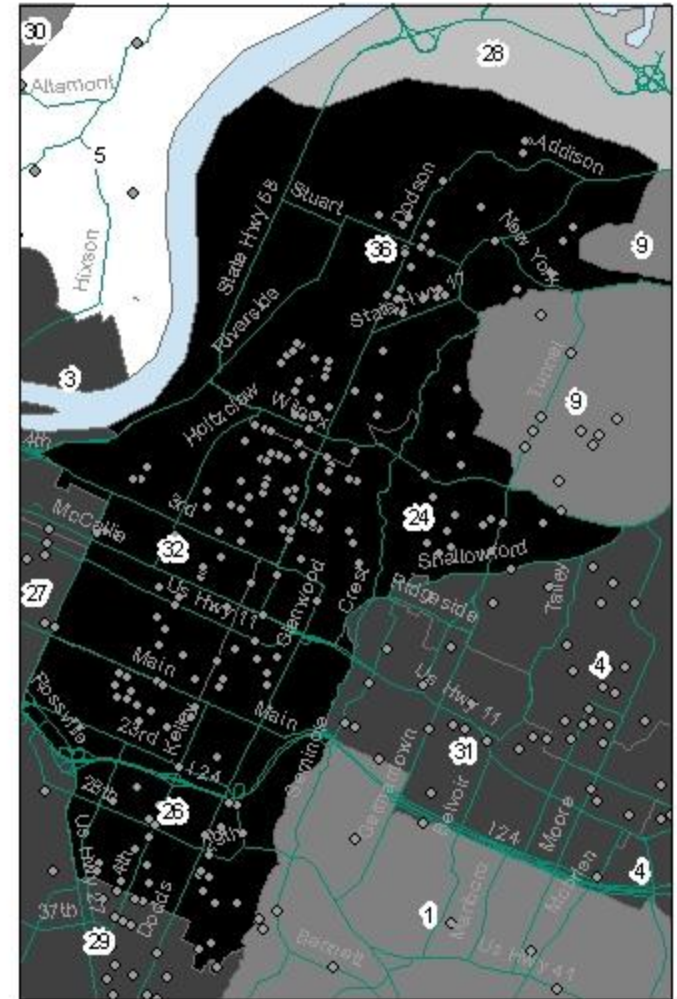
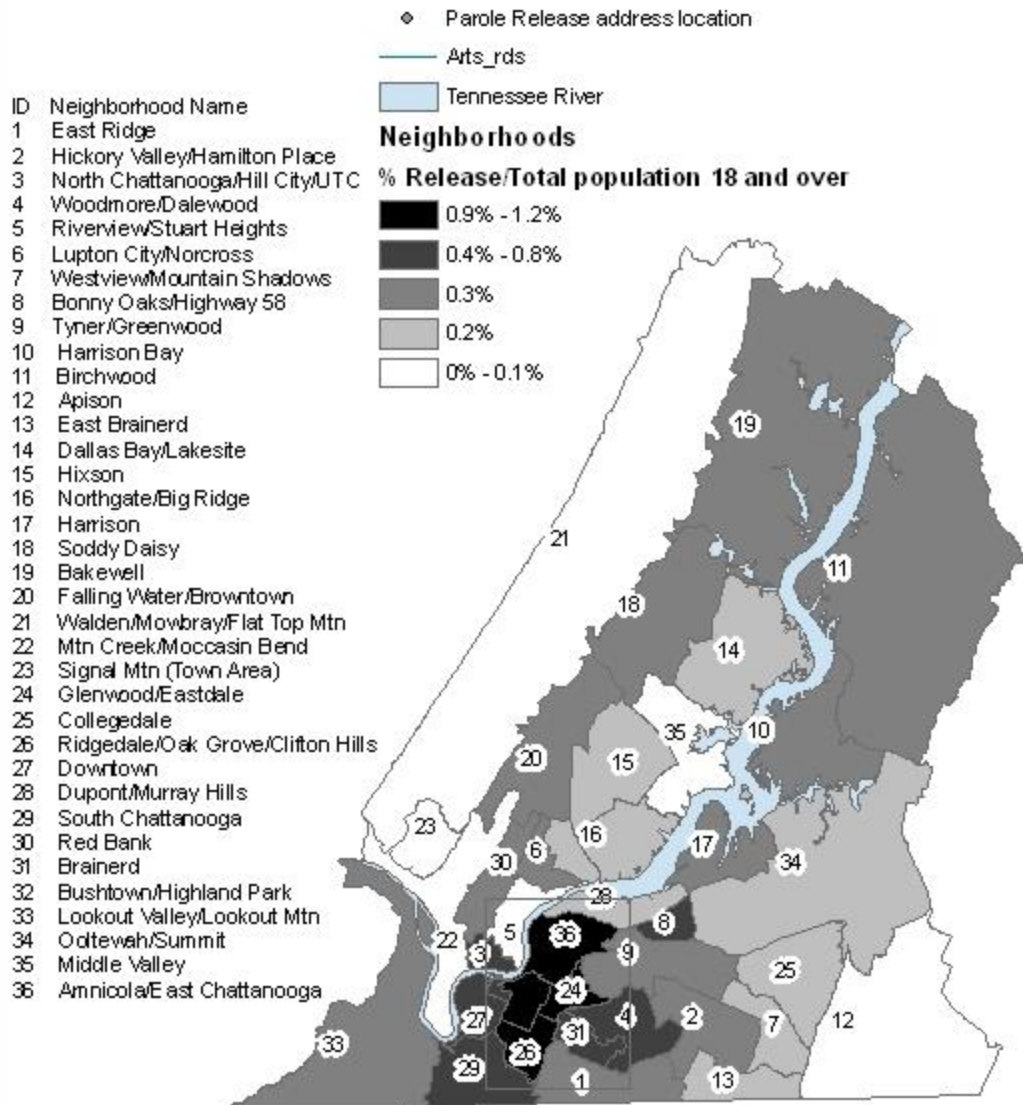
○ Aggravated Assault (Chattanooga Police Department)

Data from each local police department was not available. Chattanooga Police and Sheriff Department data files were geocoded by address location of the crime and aggregated to the neighborhood level. Approximately 95% of addresses were coded. In some cases, specific address locations were not included in the files or street address locations were not available. For Collegedale, East Ridge, Lookout Mountain, Red Bank, Signal Mountain and Soddy Daisy, complaint data from the 2005 TBI Report was used to supplement data at the neighborhood level. For these police departments, address level data was not available.

Arrest, Prosecution and Incarceration as a Response

- Hamilton County accounts for:
 - 5.4% of the total State population (2007)
 - 4.1% of TDOC admissions (2006-2007)
 - 4.9% of Total Jail population in Tennessee (August 2008)
- Offenders who go to jail and prison, in most cases, return to the community

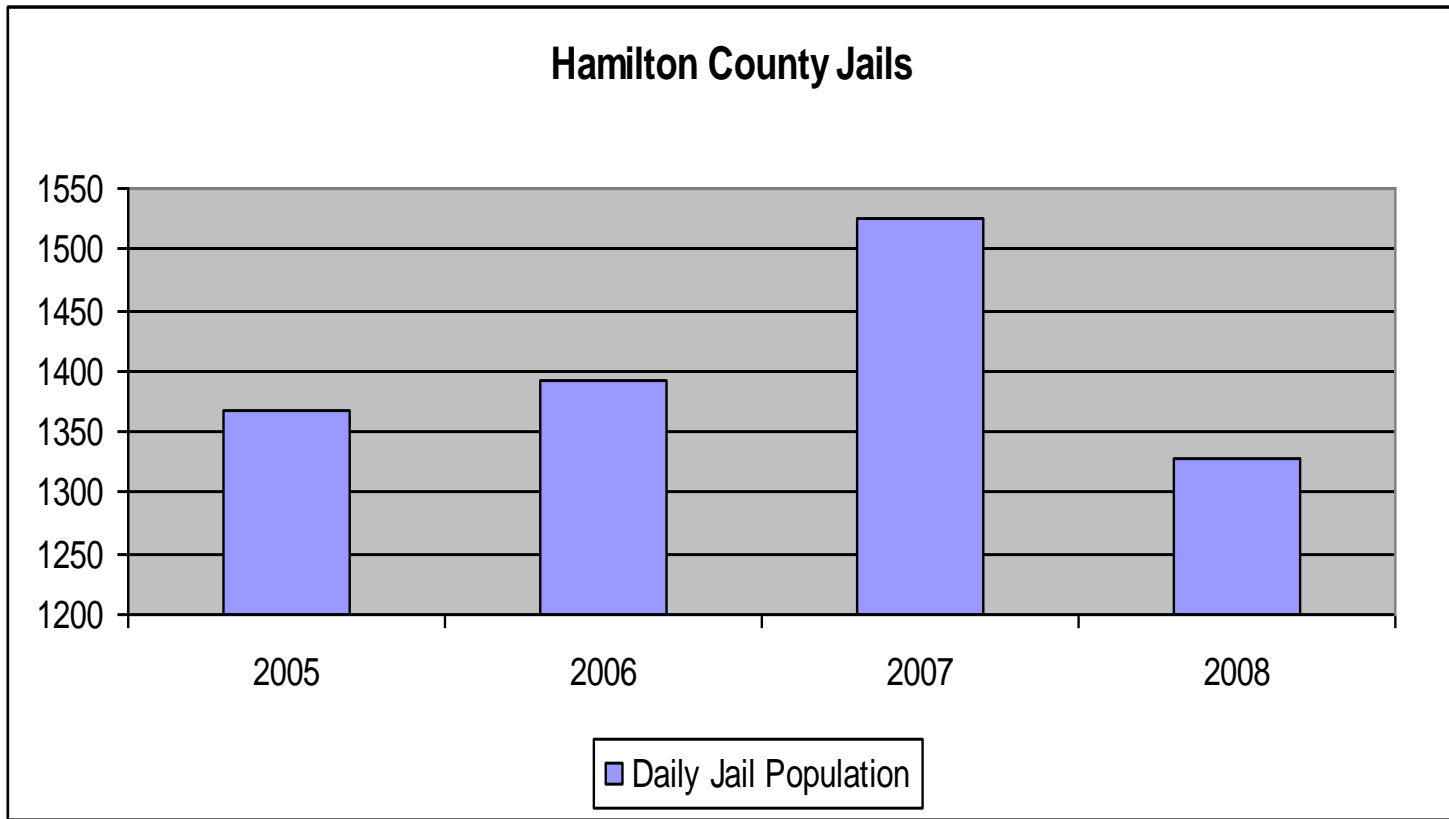
Neighborhood Release Rate: Percent of Total Population 18 and Over (2006 and 2007)



Sources: Tennessee Department of Corrections 2006 and 2007 Hamilton County Releases
 United States Census Bureau Census 2000 total population 18 years and older

Note: Out of 727 releases with Hamilton County zip codes 96% were successfully coded at address level. In some cases street address was not available. This included those with post office boxes (5), and those who indicated Silverdale (1), Hamilton County Jail (5), US Marshal (1) and a motel (1) as their release destination.

Increase in Hamilton County Jail Population



Incarceration Strategy Has a Growing Impact on County Budget

- Between FY 2003 (Actual) and FY 2007 (Budget):
 - County General Fund spending increased by 16.9%
 - Education spending increased by 12.6%
 - Incarceration (Workhouse and Jail) spending increased by 27%
- Spending on incarceration does not include capital or operating costs for Silverdale expansion

The Ochs Center for Metropolitan Studies

739 McCallie Avenue

Chattanooga, Tennessee 37403

423-425-5610

deichenthal@ochscenter.org

www.ochscenter.org